

PROPOSED FACILITY

ESTIMATED COST ~\$4,125,000 – 100% FUNDED BY ESSER

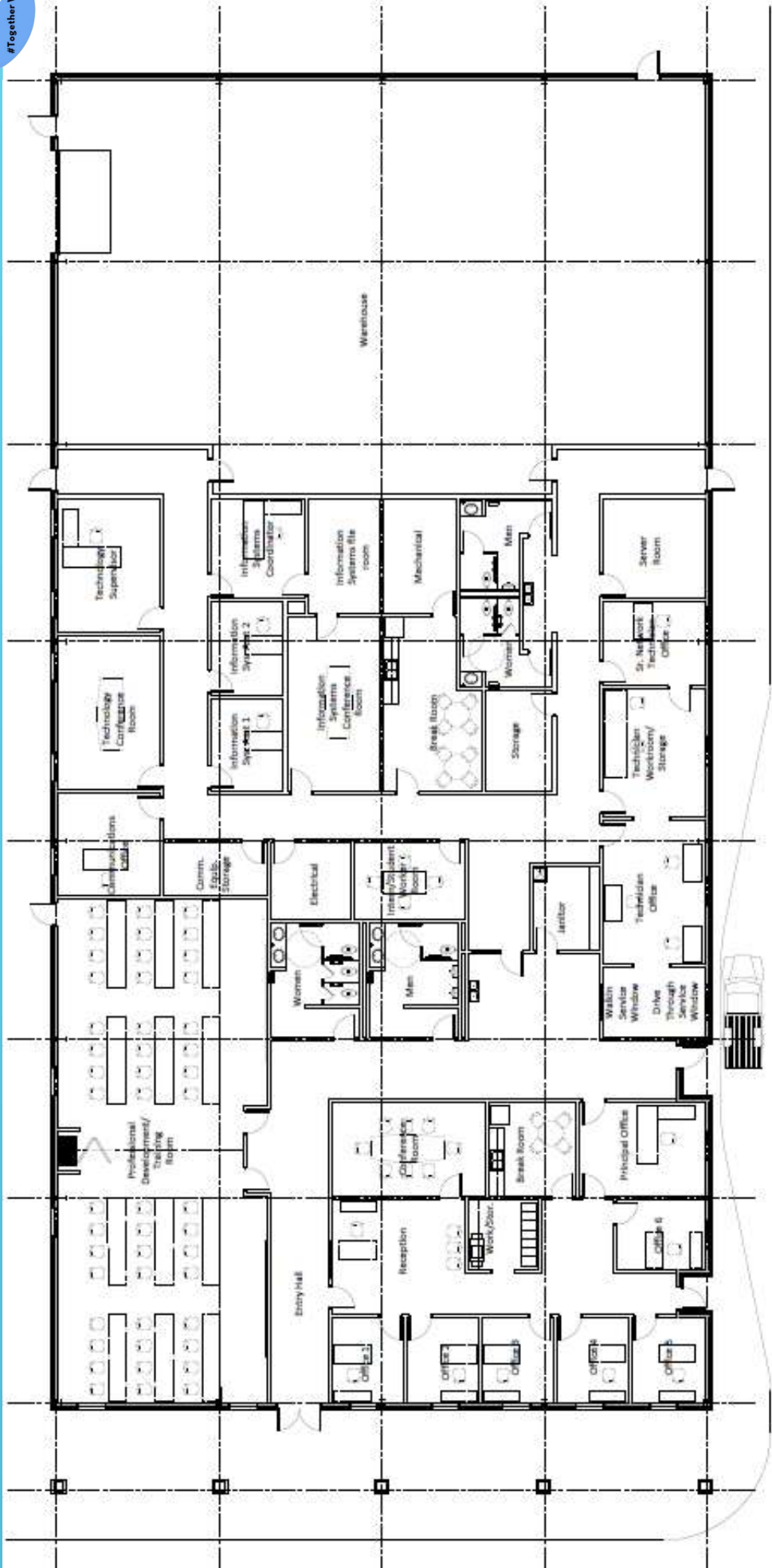


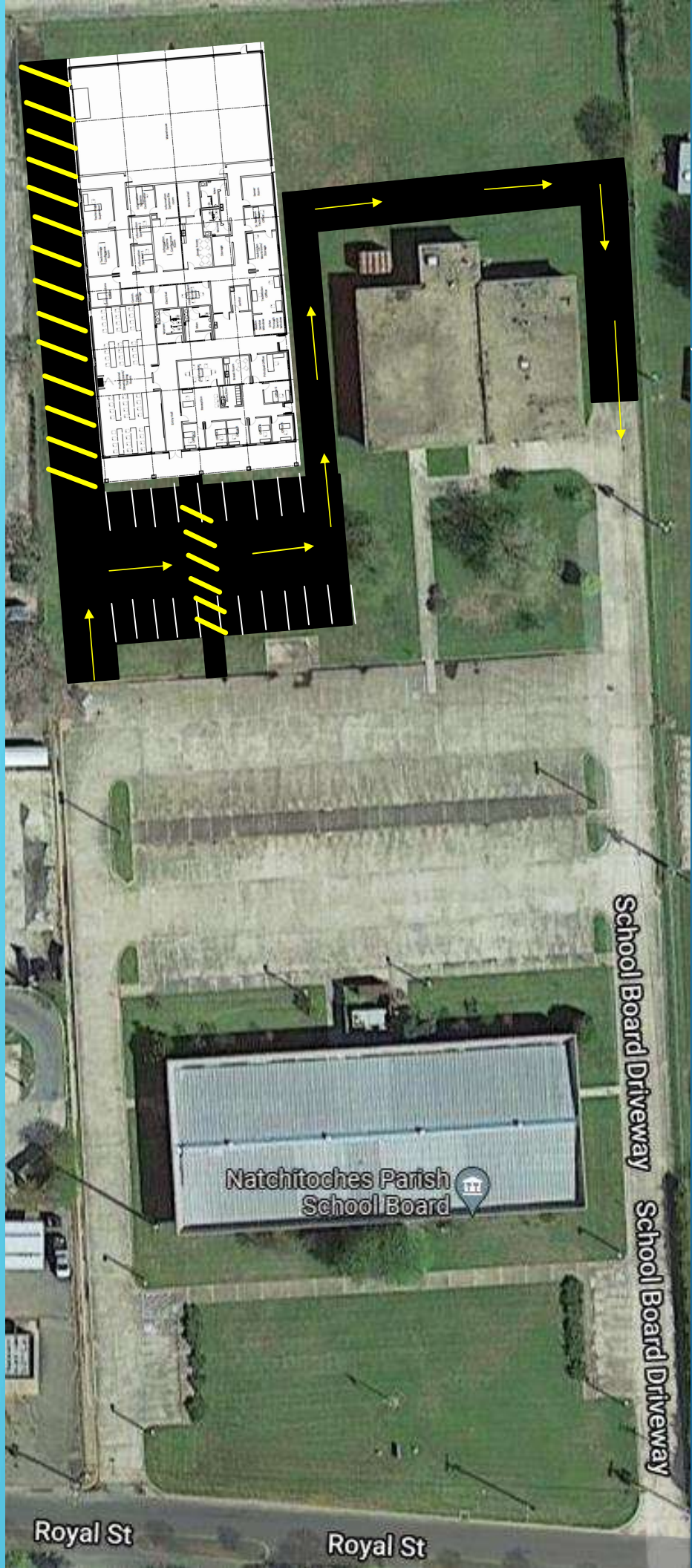
Construct a building at the Central Office location that will serve as the Technology warehouse and offices as well as house the Natchitoches Virtual Academy and Information Systems.

- Solves all priorities
 - Having a functional warehouse
 - Centrally located
 - Provides walk in Tech Support availability for students, staff, and parents
 - Provides drive through tech support option.

PROPOSED SOLUTION

NPSB EDUCATIONAL TECHNOLOGY CENTER





Natchitoches Parish
School Board

School Board Driveway

School Board Driveway

Royal St

Royal St