

SKETCH ADDENDUM

Borrower or Owner

Property Address **528 St. Clair Avenue**

City **Natchitoches**

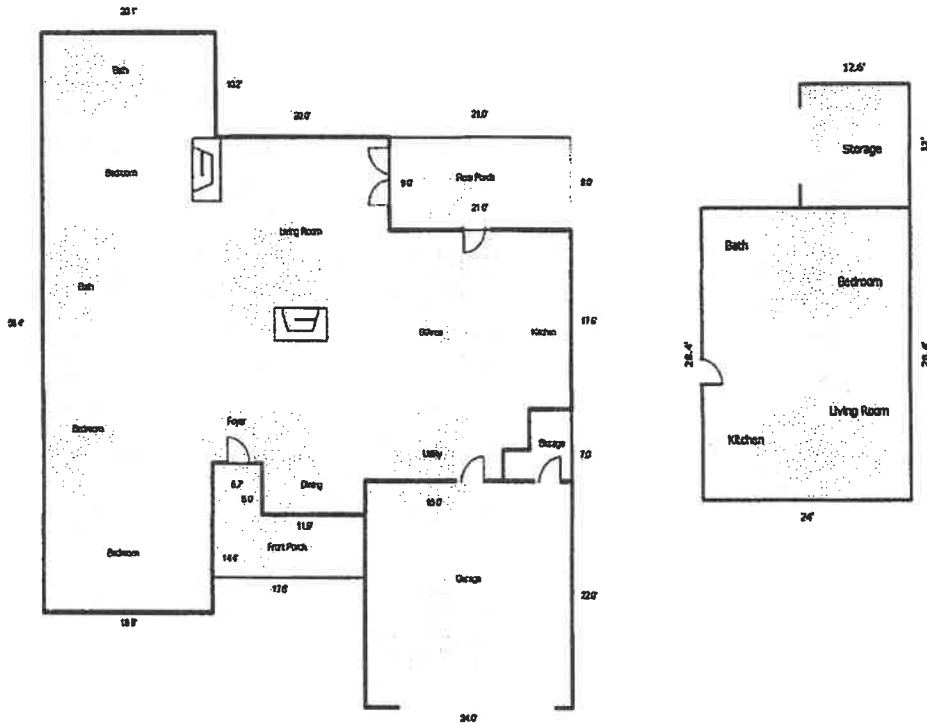
County **Natchitoches**

State **LA**

Zip Code **71457**

Client

V



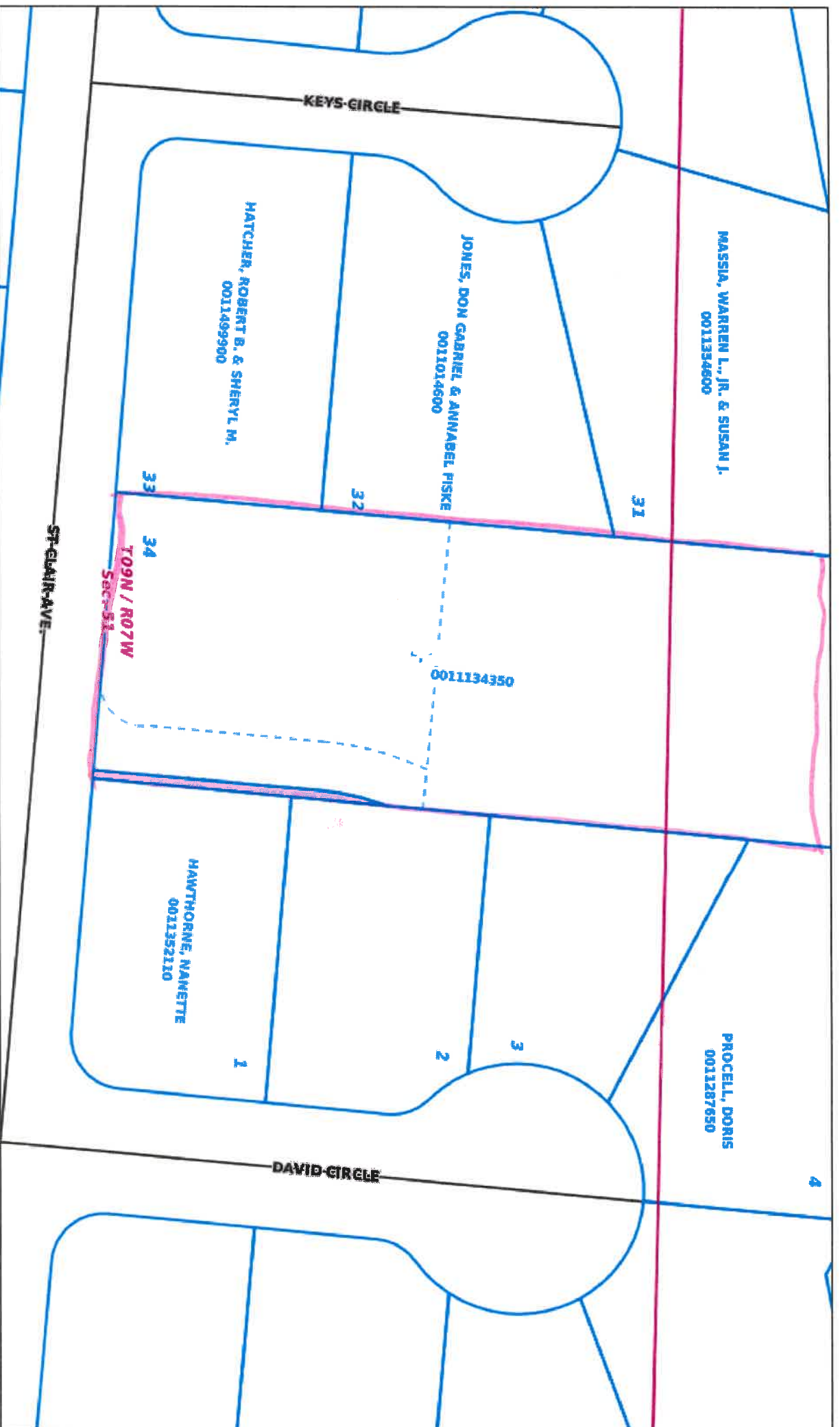
Sketch by Apex Sketch v6 Standard™

Comments:

AREA CALCULATIONS SUMMARY			
Code	Description	Net Sqn	Net Totals
GLA1	First Floor	2296.10	2296.10
GAR	Garage	528.00	528.00
F/P	Front Porch	134.10	
	Rear Porch	189.00	323.10
OTH	Storage	44.00	
	Pool House	681.60	
	Storage	151.20	876.80
Net LIVABLE Area		(rounded)	2296

LIVING AREA BREAKDOWN			
Breakdown			Subtotal
First Floor			
10.2	x	20.1	205.02
14.4	x	19.5	280.80
1.7	x	27.9	47.43
1.3	x	53.1	69.03
4.0	x	56.1	224.40
17.5	x	61.1	1069.25
9.0	x	40.1	360.90
3.3	x	11.9	39.27
8 Items			(rounded)
8 Items			2296

Geoportal Map



DISCLAIMER: Every reasonable effort has been made to assure the accuracy of the data presented. The Assessor of Natchitoches Parish makes no warranties, express or implied, regarding the completeness, reliability or suitability of the site data and assumes no liability associated with the use or misuse of said data. The Assessor retains the right to make changes and update data on this site at anytime, without notification. The parcel data on the base map is used to locate, identify and inventory parcels of land in Natchitoches Parish for assessment purposes only and is not to be used or interpreted as a legal survey or legal document. Additional data layers not originating in the Assessors Offices are also presented for informational purposes only. Before proceeding in any legal matter, all data should be verified by contacting the appropriate county or municipal office.



Geoportal Map



DISCLAIMER: Every reasonable effort has been made to assure the accuracy of the data presented. The Assessor of Natchitoches Parish makes no warranties, express or implied, regarding the completeness, reliability or suitability of the site data and assumes no liability associated with the use or misuse of said data. The Assessor retains the right to make changes and update data on this site at anytime, without notification. The parcel data on the base map is used to locate, identify and inventory parcels of land in Natchitoches Parish for assessment purposes only and is not to be used or interpreted as a legal survey or legal document. Additional data layers not originating in the Assessors Offices are also presented for informational purposes only. Before proceeding in any legal matter, all data should be verified by contacting the appropriate county or municipal office.